

BINKS[®]

New

Gemini[™] II Series

Double Diaphragm Pumps



More Fluid Delivery Per Stroke

Binks Gemini™ II

double diaphragm pumps

The New Binks Gemini II Diaphragm Pump Series builds on the already successful product line for spraying, transferring and circulating a variety of coatings. On average, the new and improved units deliver more fluid per stroke than previous models, up to*:

33%
More
[½" pumps]

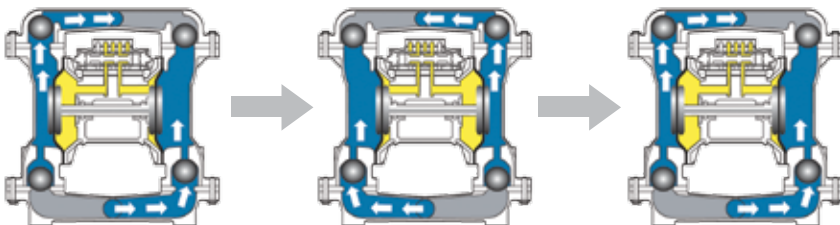
38%
More
[1" pumps]

28%
More
[1 ½" pumps]

Use the versatile Gemini II pumps to fill many of your fluid handling requirements including:

- Adhesives
- Catalyzed Varnish
- Coatings
- Paints
- Resins
- Stains
- Solvents

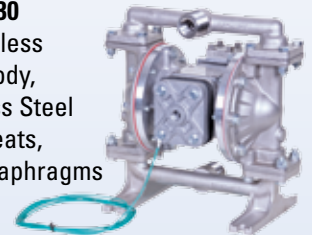
Gemini II pumps feature a double diaphragm design, providing a 1:1 fluid ratio to compressed air supply.



41-818836
½" Conductive Acetal Body, Stainless Steel Balls/Seats, PTFE Diaphragms



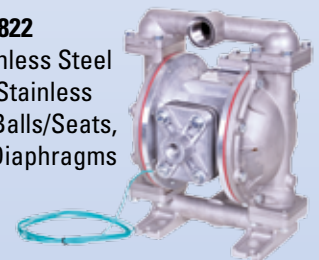
41-818830
½" Stainless Steel Body, Stainless Steel Balls/Seats, PTFE Diaphragms



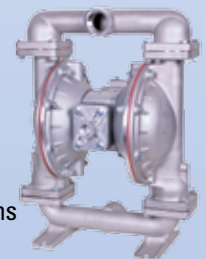
41-818820
1" Aluminum Body, Stainless Steel Balls/Seats, PTFE Diaphragms



41-818822
1" Stainless Steel Body, Stainless Steel Balls/Seats, PTFE Diaphragms



41-818810
1 ½" Stainless Steel Body, Stainless Steel Balls/Seats, PTFE Diaphragms

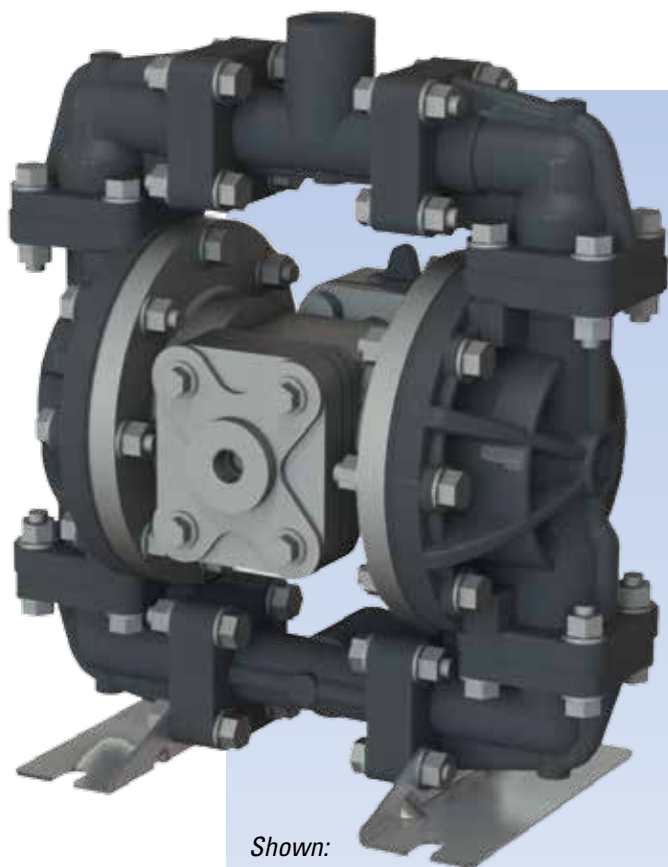


*Average percent flow rate difference when compared to Binks Gemini I at 100 PSI air inlet

New **Low Pulse
Short Stroke Pump**

Binks has added a Low Pulse Double Diaphragm pump model to the Gemini II series. The new Short Stroke pump has an optimized diaphragm design and reduction in stroke length to provide efficient pump changeover.

- Consistent spray pattern for high quality finish applications
- Pulsation reduction is greater than the competition and the Gemini I pump series
- Bonded diaphragm has increased durability



Shown:
41-818831
Short Stroke Pump
½" conductive acetal body

**27% More Fluid
Per Stroke**

than Gemini I pump series

*multiple mounting
configurations:
wall • pail • drum*

- options to customize for your specific applications



GEM2-W2D3030
Wall Mount



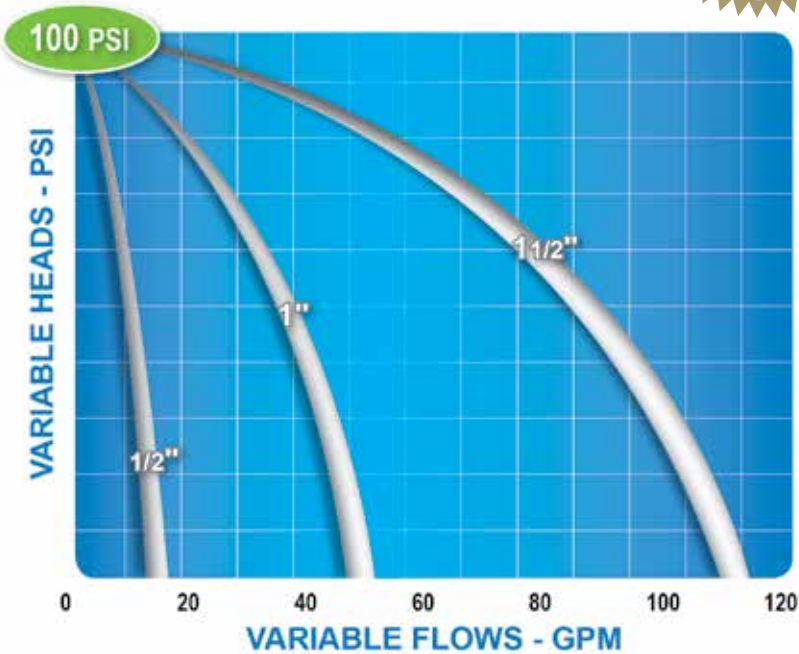
GEM2-P2D1D20
Pail Mount



GEM2-D2D1D11
Drum Mount

Binks Gemini™ II Double Diaphragm Pumps

Shown: 1/2" Acetal Pump (41-818836)



Pumps Shear-Sensitive Materials
Low internal velocities and gentle pumping action does not shear coatings

Seal-Less
No mechanical seals or packing to leak

Runs Dry Without Damage or Heat Build-up
No internal damage

Variable Flow and Pressure
Regulate the inlet air supply to adjust the pump flow from zero to maximum rated capacity

Pumps High to Low Viscosity Materials

Fully Groundable

CE and ATEX Certified

Gemini™ II Pump Packages

Customize a pump package for your specific application.

Ordering Information

Select your mounting option. Then select the desired attributes from the chart below (“A” through “F” option) and build the Binks Gemini II system number that meets your particular production needs (½” pumps only).

Select Your Mounting Options

- P = Pail
- W = Wall
- D = Drum

	A	B	C	D	E	F
GEM2-P	2	D	1	D	6	1

- | | |
|----------|---|
| A | Pump |
| 1 | = ½" Acetal 41-818836 |
| 2 | = ½" Acetal Short Stroke 41-818831 |
| 3 | = ½" Stainless Steel 41-818830 |
| B | Air Control |
| 0 | = None |
| S | = Single Air Control 41-718805 |
| D | = Dual Air Control 41-718806 |
| C | Bypass |
| 0 | = None |
| 1 | = Bypass Filter/Pulse Assembly Pail or Drum Mount 41-718812-1 |
| 2 | = Bypass Filter/Pulse Assembly 5 Gallon Wall Mount 41-718812-2 |
| 3 | = Bypass Filter/Pulse Assembly 55 Gallon Wall Mount 41-718812-3 |
| D | Agitator |
| 0 | = None |
| D | = Stainless Steel Direct Drive 41-3312-S |
| G | = Stainless Steel Gear Reduced Drive (Drum Mount Only) 31-400 |
| E | Siphon |
| 0 | = None |
| 1 | = Polypropylene Siphon Tube, Drum Mount 41-718813-33 |
| 2 | = Polypropylene Siphon Tube, Pail Mount 41-718813-12 |
| 3 | = Polypropylene Suction Hose Assembly Wall Mount 5 Gallon 41-718818-5 |
| 4 | = Polypropylene Suction Hose Assembly Wall Mount 55 Gallon 41-718818-55 |
| 5 | = Stainless Steel Siphon Tube, Drum Mount 41-718817-33 |
| 6 | = Stainless Steel Siphon Tube, Pail Mount 41-718817-12 |
| 7 | = Stainless Steel Suction Hose Assembly Wall Mount 5 Gallon 41-718819-5 |
| 8 | = Stainless Steel Suction Hose Assembly Wall Mount 55 Gallon 41-718819-55 |
| F | Fluid Regulator |
| 0 | = None |
| 1 | = Stainless Steel Fluid Regulator 84-320 |

1" Gemini II Diaphragm Pump Packages

41-818120 Package Contains	Part #	41-818121 Package Contains	Part #
1" Aluminum Gemini II Pump	41-818820	1" Stainless Steel Gemini II Pump	41-818822
Wall Mount	41-718800	Wall Mount	41-718800
Dual Air Control	41-718808	Dual Air Control	41-718808
Fluid Regulator	84-320	Fluid Regulator	84-320



Specifications

Gemini II Pumps	41-818836 ½" Acetal	41-818831 ½" Acetal Short Stroke	41-818830 ½" Stainless	41-818820 1" Aluminum	41-818822 41-818823(BSP) 1" Stainless	41-818810 1 ½" Stainless
Air Inlet Pressure Range	0-100 PSI	0-100 PSI	0-125 PSI	0-125 PSI	0-125 PSI	0-125 PSI
Air Inlet Size	¼" NPT	¼" NPT	¼" NPT	½" NPT	½" NPT	¾" NPT
Max Fluid Pressure	100 PSI (6.9 bar)	100 PSI (6.9 bar)	125 PSI (8.6 bar)	125 PSI (8.6 bar)	125 PSI (8.6 bar)	125 PSI (8.6 bar)
Fluid Inlet/Outlet	½" NPT	½" NPT	½" NPT	1" NPT	1" NPT	1 ½" NPT
Max Flow Rate	14 gpm (52 lpm)	7.5 gpm (28 lpm)	14 gpm (52 lpm)	45 gpm (170 lpm)	45 gpm (170 lpm)	106 gpm (401 lpm)
Maximum Suction Lift	13 ft (3.9 m)	8 ft (2.4 m)	12 ft (3.6 m)	17 ft (5.1 m)	17 ft (5.1 m)	22 ft (6.7 m)
Max Particle Size	.125" (3 mm)	0.125" (3 mm)	.125" (3 mm)	.25" (6 mm)	.25" (6 mm)	.25" (6 mm)
Max Temperature Limits	180 F (82 C)	180 F (82 C)	220 F (104 C)	220 F (104 C)	220 F (104 C)	220 F (104 C)
Flow @ 60 Cycles/Min	3.12 gal (11 liters)	1.68 gal (6 liters)	3.12 gal (11 liters)	13.2 gal (50 liters)	13.2 gal (50 liters)	49.2 gal (186 liters)
Cycles Per Gallon	19.2	35.7	19.2	4.5	4.5	1.2
Displacement Per Cycle	.052 gpm (.196 lpm)	0.028 (.105 lpm)	.052 gpm (.196 lpm)	.22 gpm (.84 lpm)	.22 gpm (.84 lpm)	.82 gpm (3.0 lpm)
Noise Level With Muffler	84 dBA Max	92 dBA Max	86 dBA Max	92 dBA Max	92 dBA Max	95 dBA Max
Weights	14 lbs (6.4 kg)	14 lbs (6.4 kg)	21 lbs (9.5 kg)	28 lbs (12.7 kg)	43 lbs (19.5 kg)	95 lbs (43.0 kg)
Repair Kits:						
Air End Seal Kit	41-718850	41-718850	41-718850	41-718855	41-718855	41-718858
Diaphragm Kit	41-718853	41-718861	41-718851	41-718856	41-718856	41-718860
Ball & Seal Kit	41-718854	41-718854	41-718852	41-718857	41-718857	41-718859
Operation Manual	77-2998	77-2995	77-2997	77-2994	77-2994	77-2993

Part #	Accessories
41-9000	Drum Elevator
41-718805	Single Regulator Air Control (½" pumps)
41-718806	Dual Regulator Air Control (½" pumps)
41-718807	Single Regulator Air Control (1" pumps)
41-718808	Dual Regulator Air Control (1" pumps)
41-718809	Single Regulator Air Control (1 ½" pumps)
41-718810	Pail Cover Stainless Steel (for ½" and 1" pumps)
41-718800	Wall Bracket (for ½" and 1" pumps)
41-718815	Drum Cover 55 gal. Stainless Steel (for ½" and 1" pumps)
41-718812-1	Bypass Filter/Pulse Assembly Pail or Drum Mount
41-718812-2	Bypass Filter/Pulse Assembly Wall Mount 5 gal. Containers

Part #	Accessories
41-718812-3	Bypass Filter/Pulse Assembly Wall Mount 55 gal. Containers
0114-011798	Replacement Grounding Kit
84-320	S.S. Fluid Regulator ¾" NPT (m) x ¾" NPS (m) 1 GPM 5 - 55 PSI Outlet Pressure, Includes Riser Tube and 83-2571 0-100 PSI Gauge (for ½" pumps)
HFRL-508	Centrifugal Filter/Regulator Assembly
71-31101	25' Ergo Flex Air Hose ¼" ID with ¼" NPS (f) Swivel Connections
71-3303	25' Fluidall Hose ¾" ID with ¾" NPS (f) Swivel Connections
41-2296	5 gal. Alum/Steel Siphon Kit for 1" Pump
41-10467	55 gal. Galvanized Siphon Kit for 1" Pump

BINKS®

The Single Source Solution
for Spray Finishing and Fluid Handling

www.binks.com • 800.992.4657 (USA/Canada)

Sales and Service Through A Global Network
of Industrial Distributors



Binks® warrants to the original end-use purchaser that the Binks branded products "MX™", "Maple™", and "Gemini™ II" shall not fail under normal use and service due to a defect in material or workmanship within five (5) years from the date of shipment from Binks. Does not include normal wear. See complete warranty at www.binks.com

Binks is a registered trademark of Finishing Brands. MX, Maple, and Gemini are trademarks of Finishing Brands.