

ITW FINISHING SYSTEMS—THE SYNERGY OF LEADERS

Addressing today's industrial and automotive finishing requirements, ITW Ransburg is out to set new standards for quality, innovation and customer service. To maintain the leadership positions we've forged in the markets we serve, we believe it is our role to imagine the future needs of our customers and to be constantly improving our products and processes to meet those needs.

As the global innovator and market leader in finishing equipment, ITW Ransburg is able to offer quality products and a commitment to service. Customers worldwide benefit from our experience and capabilities.

THE BENEFITS ARE CLEAR

- Innovative Product Design
- Comprehensive Systems
- On-site Technical Representation
- In-house Labs
- Training Center
- 24 Hour Technical Support
- Nationwide Distributor Network



For over a century, Ransburg has been at the forefront of technological developments in finishing that have had the greatest positive environmental impact. In fact, many of the improvements we've made have been centered on advancing transfer efficiency. Better efficiency not only results in cost savings and increased productivity, but it's also key to meeting or exceeding stringent environmental codes.

Meets standards of FM/CSA/CE/ATEX for safety

CONTACT YOUR AUTHORIZED ITW RANSBURG DISTRIBUTOR TO FIND OUT HOW TO INVEST IN OUR PRODUCTS.

ITW Ransburg

ITW Ransburg
An Illinois Tool Works Company
320 Phillips Ave., Toledo, Ohio 43612-1493 USA
Tel: +1-419-470-2000 Fax: +1-419-470-2270
General email: marketing@itwransburg.com
web: www.itwautofinish.com / www.itwransburg.com

ITW Automotive Finishing UK (a division of ITW Ltd.)
Anchorbrook Industrial Estate, Lockside, Aldridge,
Walsall, West Midlands. U.K. WS9 8EG
Tel. +44 (0) 1922 423 700 Fax. +44 (0) 1922 423 705
General email: info@itwautofin.co.uk
Web: www.itweuropeanfinishing.com

ITW Finishing Equipment (Shanghai) Co., Ltd.
1st Floor, Building 19, No. 201, Minyi Road
Xinqiao Town, Songjiang District Shanghai, China 201612
Tel. (86) 21-33730108 Fax (86) 21-33730308

ITW Oberflächentechnik GmbH & Co. KG
Justus-von-Liebig-Straße 31, 63128 Dietzenbach
Tel. +49 (0) 6074 403 1 Fax. +49 (0) 6074 403 300
General email: info@itw-finishing.de
web: www.itweuropeanfinishing.com

ITW Surfaces at Finitions
163-171, Av. Des Auréats, 26014 Valence cedex
Telephone: +33 (0) 4 75 75 27 53
Telecopie: +33 (0) 4 75 75 27 79
General email: info@itwsf.com
web: www.itweuropeanfinishing.com

ITW Finishing
Ringwood Road
Bournemouth, Dorset, England BH11 9LH
Tel. (44) 1202-571111 Fax (44) 1202-573488
Web: www.itwfinishing.co.uk

ITW VECTOR SOLO™ VECTOR™



ITW RANSBURG VECTOR SYSTEMS

WE'RE TRANSFORMING
ELECTROSTATIC TECHNOLOGIES

ITW Ransburg

VECTOR ELECTROSTATIC SYSTEMS:

Corded and Cordless Guns From The World's Leader In Electrostatic Innovation

Anyone in the coatings business knows the critical advantages of harnessing electrostatic technology for their operations. Since ITW Ransburg invented the process over fifty-five years ago, the industry has embraced the special benefits electrostatic systems have provided their painters and the quality of their parts. Generation after generation of ITW Ransburg guns have yielded improvements that make the case for electrostatic spray technology ever more compelling for companies seeking higher efficiency and quality improvement.

Our Vector line of corded guns and newest generation Vector Solo cordless model are proof of our commitment to continually bring new enhancements to a proven and superior technology.

SINCE THE TECHNOLOGY'S INCEPTION, ELECTROSTATICS
HAVE BENEFITED USERS BY:

- Significantly improving parts appearance
- Improving production capacity and speed
- Reducing paint costs by improving efficiency
- Minimizing VOC emissions
- Lowering maintenance costs

VECTOR SOLO™

Our World Famous Electrostatic Technology Comes Up With A New Cordless Gun That Stands Out – And Alone – In The Liquid Coating Industry

Vector Solo is the result of years of work to develop a cordless electrostatic gun worthy of the Ransburg name and the quality tradition we've upheld world wide.

ERGONOMIC BALANCE... reduces operator fatigue



VECTOR SOLO - ANYTHING BUT ORDINARY

ITW Ransburg set out to develop anything but just another ordinary cordless gun. We took the time to get it right - not rushed. The result represents an extraordinary accomplishment representing the best of ITW Ransburg's innovation, design and engineering!



Ransburg's best in class atomization technology...superior atomization delivers highest finish quality

Uses minimal air consumption to drive the power source...requires only an additional 4 scfm (120 slpm) over a corded applicator

Easily maintained...modular design is easy to repair and/ if needed replace components

Replaceable cascade...cascades are replaceable more easily and at a lower cost than a combination barrel and potted cascade assembly

LED style voltage indicator light...operator can easily tell if high voltage is on or off

Low motor speed...translates to minimal vibration transmitted to the handle. Lower vibration transmission compared to competitive units provides easier handling and less operator fatigue and longer motor life

High-low quick voltage setting...easy switching for targets with recesses where Faraday cage effects could create unwanted results at full voltage

Solvent proof "O" rings in critical solvent areas...unique compound eliminates worries of swelling or erosion in solvent exposed areas

Flexible electrode...eliminates permanent deformation of the wire

Onboard diagnostic test points provide easy trouble shooting...allows use of standard multi-meters to diagnose potential problems with the unit and target for repair or parts replacement

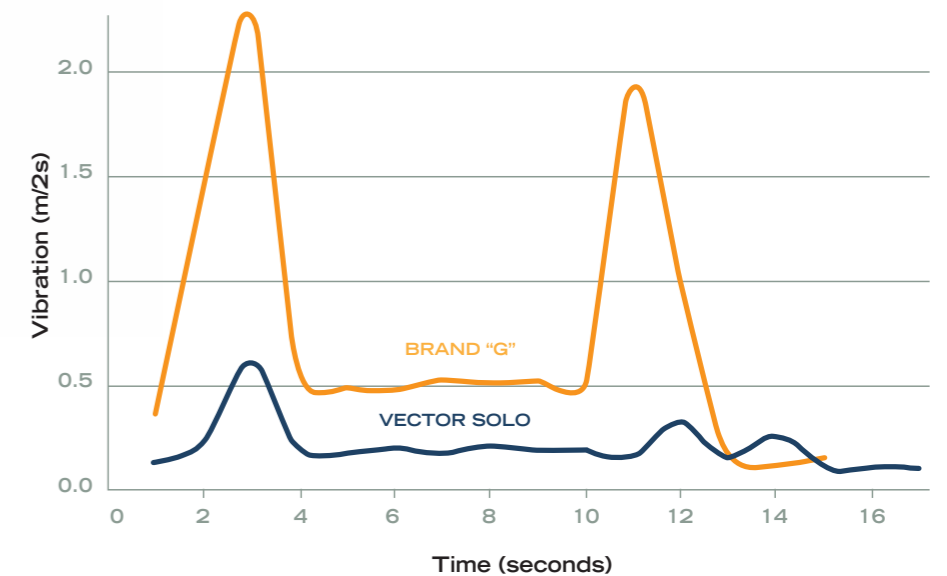
Encapsulated cascade...with no direct openings to the electronics of the cascade, the chance of solvent penetration is eliminated

Robust motor design, resists issues with common air supply conditions...subjected to dirty air, wet air, only air or dry air, the unit still functions

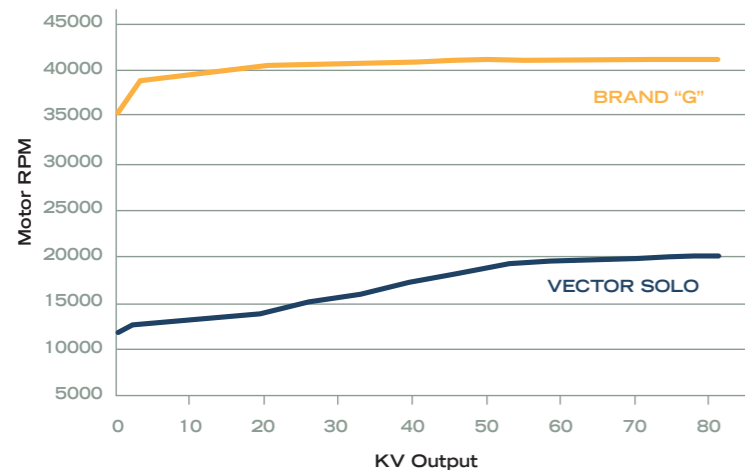
Quick high voltage ramp up time...zero to full voltage in as quick as the air moves through the power module

Easily repaired...just three metric Allen wrenches, an adjustable wrench, special gun wrench and the jam nut tool are all the service tools required to totally disassemble and re-assemble the unit.

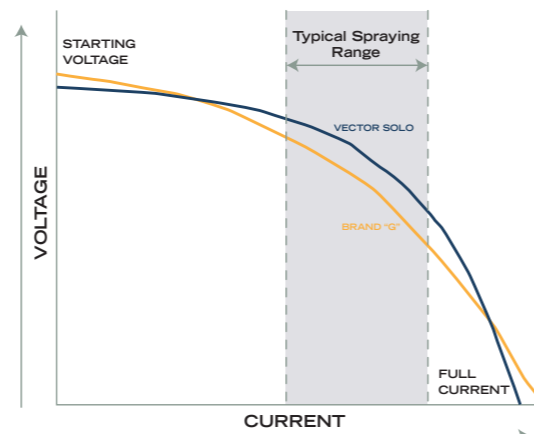
GUN VIBRATION



RPM VS. KV OUTPUT



The Vector Solo produces voltage at a much slower speed, resulting in faster ramp up time, less vibration and longer motor life.



In the Typical Spraying Range, the Vector Solo produces higher KV which results in better Transfer Efficiency and less overspray.



With Vector Solo, your finishing operation can expect to see:

- CORDLESS PORTABILITY AND CONVENIENCE
- BEST IN CLASS ATOMIZATION TECHNOLOGY
- SUPERIOR ERGONOMIC BALANCE

